








# Your educational *journey* starts at LSSU

Whether you are returning to Lake Superior State University (LSSU) or joining us for the first time as an incoming freshman, we are thrilled to welcome you to the 2024 academic year in beautiful Sault Ste. Marie, located in Michigan's Upper Peninsula! Your journey at Lake Superior State University is an exciting one, and we at Limestone Federal Credit Union (LFCU) are here to support you every step of the way.

## At LSSU, you'll find:

-  Academic Excellence: Dive into your studies with the guidance of dedicated faculty who are committed to your success.
-  Vibrant Campus Life: Join clubs, participate in sports, and make lifelong friends through various student organizations and events.
-  Breathtaking Surroundings: Enjoy the natural beauty of the Upper Peninsula, with opportunities for outdoor adventures just a stone's throw away.

## At LFCU, we're here to help you manage your finances with:

-  Student-Friendly Services: From checking and savings accounts to student loans and financial education, we offer a range of products designed to meet your needs.
-  Convenience and Accessibility: Our mobile app means you can manage your money anytime, anywhere, onsite printing of debit cards means you'll never be without a payment method.
-  Community Focus: As a member-owned credit union, we're dedicated to supporting our local community and helping you achieve your financial goals.
-  Financial Literacy: We offer a variety of tools to help you succeed; from Adulting 101 courses to a Workforce Excellence Series offered in partnership with Upper Peninsula Michigan Works!. We've got you covered with short info sessions designed to be on point and relevant to students.

## Lake Superior State University and Limestone Federal Credit Union's Partnership:

LSSU and LFCU are committed to your success both academically and financially. We understand that managing your finances can be challenging, especially as a student. That is why we're here, to offer you the tools and resources you need to make smart financial decisions and build a solid foundation for your future.

Welcome to the LSSU and LFCU family! We have taken the liberty of putting together a box of swag, local coupons, and information sure to jump start your time at LSSU. We're excited to see all that you will achieve during your time here. Best wishes for a successful and enjoyable academic year!

Sincerely,

Lake Superior State University and Limestone Federal Credit Union



# Start a career while going to college

The Hub @ LSSU, driven by Limestone FCU provides students with paid positions through our Internship Programs and an opportunity to build a career while attending Lake Superior State University. Students can choose a business unit and gain skills relating to Member Services, Marketing, Finance, IT, Operations, or Executive C-Suite.

Email your cover letter & resume to [careers@limestonefederal.com](mailto:careers@limestonefederal.com)



## Financial Success Planning

The Hub @ LSSU has the steps it takes to help students reach their financial goals while going to college. This semester, we're proud to introduce Financial Success Planning! Our tailored roadmap aims to steer students toward financial stability throughout their journey at Lake Superior State University.

By fostering these habits, students can maintain their financial well-being well beyond graduation. Participants will gain skills in budgeting, goal-setting, and attending campus-wide Financial Literacy events to enrich their financial knowledge.

Text 'Financial Success' to 906-341-6070 to schedule a time to meet with our Branch Manager.



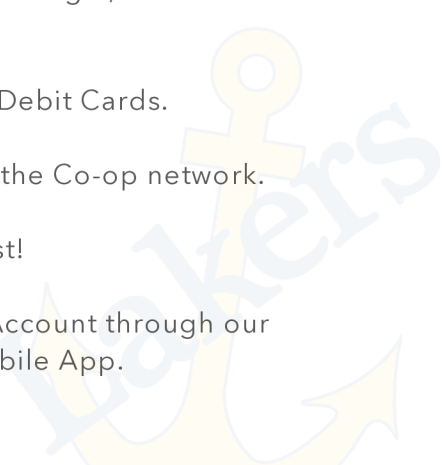
## The Laker VISA Debit Card

Stop by The Hub @ LSSU to pick up your Laker VISA Debit Card when you arrive on campus. Our VISA Debit Cards offer opportunities to earn cash back through our Dream Points Rewards program and feature...

- ✓ Digital Wallets available with Apple, Google, and Samsung Mobile Devices.
- ✓ Tap2Pay available on all Laker VISA Debit Cards.
- ✓ Skip the fees at any ATM/ITM within the Co-op network.
- ✓ Get paid up to 2 days early at no cost!
- ✓ Access your Checking and Savings Account through our modernized Online Banking and Mobile App.



Join before classes start!



# WORKPLACE

## Excellence Training



UP Michigan Works! and The Hub @ LSSU are co-hosting Workplace Excellence series on the campus of Lake Superior State University! Participants will learn the soft skills employers are looking for through the no-cost Workplace Excellence series. Upon course completion, each participant will be awarded a certificate of achievement. This course is open to anyone. All sessions start at 6:00 p.m. Visit [limestonefederal.com/workplace-excellence-training](http://limestonefederal.com/workplace-excellence-training) to learn more.

### Session Dates:

September 4, 2024 | September 11, 2024  
September 18, 2024 | September 25, 2024

### Register Today!

Scan the QR Code with your mobile device to register.



## Adulting 101

### No-Cost Four-Week Financial Course

Hosted by Limestone Federal Credit Union, this four-week no-cost financial course is designed for students who are new to making financial decisions or those who simply want to brush up on their skills. Our team will guide students through a series of exercises aimed at building essential financial skills and the confidence needed to navigate their personal finances.

### Session Dates:

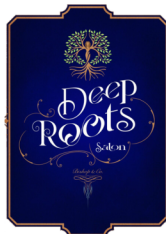
October 16, 2024 | October 23, 2024  
October 30, 2024 | November 6, 2024

### Register Today!

Scan the QR Code with your mobile device to register.



Please enjoy your community welcome coupons, courtesy of...



# LSSU Important Dates

LSSU is filled with events throughout a student's years on campus. Below are a few important dates to mark your calendars for. It is recommended for new, returning, and freshman students to participate in these on-campus events. These events will not only improve a student's life on-campus but also give them an opportunity to learn more about the community, finances, and LSSU.



## Welcome Week | August 21-23, 2024

Welcome Week is the week students move-in at LSSU. Get ready for a fun-filled adventure here at LSSU during Welcome Week.

## Freshman First Year Experience Financial Trivia | August 23, 2024

During the Freshman First Year Experience, Limestone Federal Credit Union will be hosting Financial Trivia. Be prepared to test your financial knowledge and win prizes.

## Classes Begin | August 26, 2024

On August 26, 2024, the Fall 2024 semester begins. Tip: locate your classrooms prior to this date so you aren't late on the first day.

*go lakers!*

## Lakerpalooza | August 30, 2024

LSSU's annual celebration to welcome new and returning students to the campus and the surrounding communities! Stop by The Hub @ LSSU's photo booth to capture your first memorable event here at LSSU.

## GLSW Weekend | October 18-20, 2024

Great Lake State Weekend (GLSW) began in 1995 and is LSSU's Homecoming Weekend for students, alumni, families and the Sault Ste. Marie community. Join LSSU October 18-20, 2024, for GLSW.

## Career Pathways | October 29, 2024

Hosted by Limestone Federal Credit Union, Career Pathways is an event where students explore local career paths, learn from experts, expand their professional networks, gain valuable insight into employer needs and internship programs. This event is highly recommended to all students.

# Meet The Team



**Chelsey Zeeryp**  
Branch Manager



**Kariann Paoli**  
MSR - Deposits & Lending Operations



**Sabrina Oshelski**  
Business Development Officer



- 📞 Call The Hub at 906-341-3118 x3000
- 📱 Text The Hub at 906-341-6070
- ✉️ Email the Branch Manager at [czeeryp@limestonefederal.com](mailto:czeeryp@limestonefederal.com)
- 🌐 Visit us online at [limestonefederal.com](http://limestonefederal.com)

